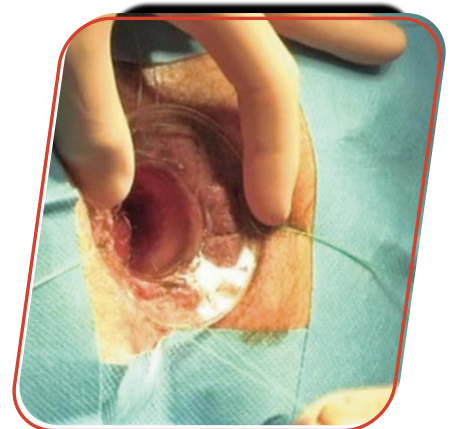


PURSESTRING ANOSCOPE KIT







WHEN YOU PUT PATIENTS' HEALTH FIRST,
REMARKABLE THINGS HAPPEN

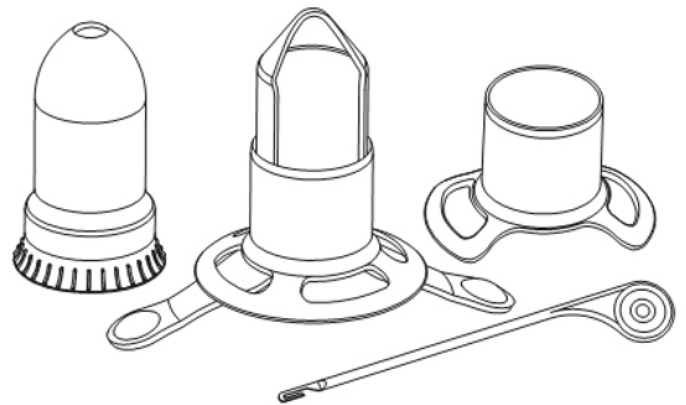
Frankenman were proud to be the first company to manufacture and supply a dedicated stand alone, "CK Kit" to assist surgeons in the application of a pursestring suture in complex trans-anal and low rectal procedures.

CK KIT

Each CK Kit is available in both 32mm and 34mm diameters, to allow for variations in patient anatomy

Each CK Kit contains the following components.

-  1 x Suture Threader
-  1 x Circular Anal Dilator "CAD" – "Universal" or "Butterfly"
-  1 x Anal Dilator
-  1 x Transparent Purse-String Anoscope.



CIRCULAR ANAL DILATOR

Frankenman were the first company to manufacture a "Circular Anal Dilator", designed specifically for patients with a narrow pelvis, where the ischium may restrict insertion, such as observed in male anatomy. Two different styles of "CAD" are available.



 Butterfly (Male)

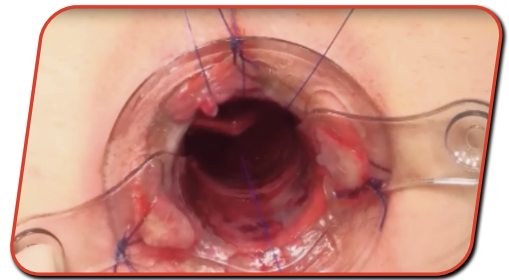
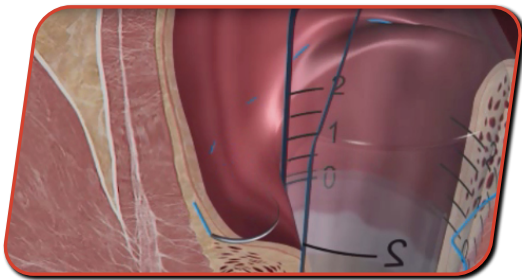


 Universal (Female)

PURSE-STRING ANOSCOPE

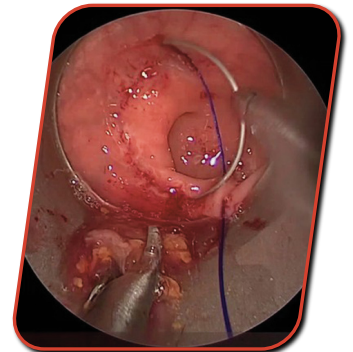
Frankenman was the first company to recognise and realise the benefits of a **Transparent** Anoscope, in terms of improved visualisation.

The addition of a “measuring scale” also assists in the correct placement of a pursestring suture



USE IN TATME

The Frankenman Purse String Anoscope Kit, is the perfect device to utilise in the application of an accurate Distal Purse string suture during the TaTME procedure.








ASSOCIATED PRODUCTS FOR TATME

Frankenman is able to provide a full range of products for TaTME procedures, including:

- Transanal Access Port
- Dedicated Short, extended anvil, compact stapler
- Anvil holder
- Linear Cutting stapler
- Purse-string Anoscope Kit



CIRCULAR ANAL DILATOR 'CAD'

PRODUCT CODE	SUTURE THREADER	UNIVERSAL (FEMALE)	BUTTERFLY (MALE)	ANAL DILATOR	PURSE-STRING ANOSCOPE	PER BOX
						6
CK32F	1	1	-	1	1	
CK32M*	1	-	1	1	1	
CK34F	1	1	-	1	1	
CK34M*	1	-	1	1	1	

*References available in our stock at REY Médical SA

ALSO AVAILABLE FROM FRANKENMAN

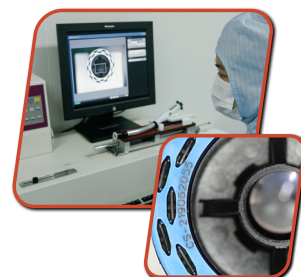
<p>STANDARD CIRCULAR STAPLERS</p> 	<p>COMPACT CIRCULAR STAPLERS</p> 	<p>LINEAR STAPLERS</p> 	<p>LINEAR CUTTING STAPLERS</p> 	<p>TRANSCUT™ - TRANSVERSE LINEAR CUTTING STAPLERS</p> 
<p>CIRCULAR STAPLERS FOR RECTAL PROLAPSE & ANOPEXY</p> 	<p>UNIVERSAL TRANSANAL ACCESS PLATFORM</p> 	<p>ENDOSCOPIC LINEAR CUTTER</p> 	<p>ACCESSORIES</p> 	

QUALITY CONTROL

We pride ourselves on world leading continual quality improvement processes.

ALL stapling devices and reloads have a unique serial number, as well a batch/lot number, to allow for more accurate tracking and traceability.

In addition we test fire 100% of our products (before they are then reloaded and packaged), to verify correct B-Shaped closure.



YOUR PARTNER IN SURGERY SINCE 2003

INNOVATION AND QUALITY AT THE SERVICE OF SURGERY

+41 (0)22 743 24 10 • contact@reymedical.ch • www.reymedical.ch

The best technology available on the market, at the best price, at the right time